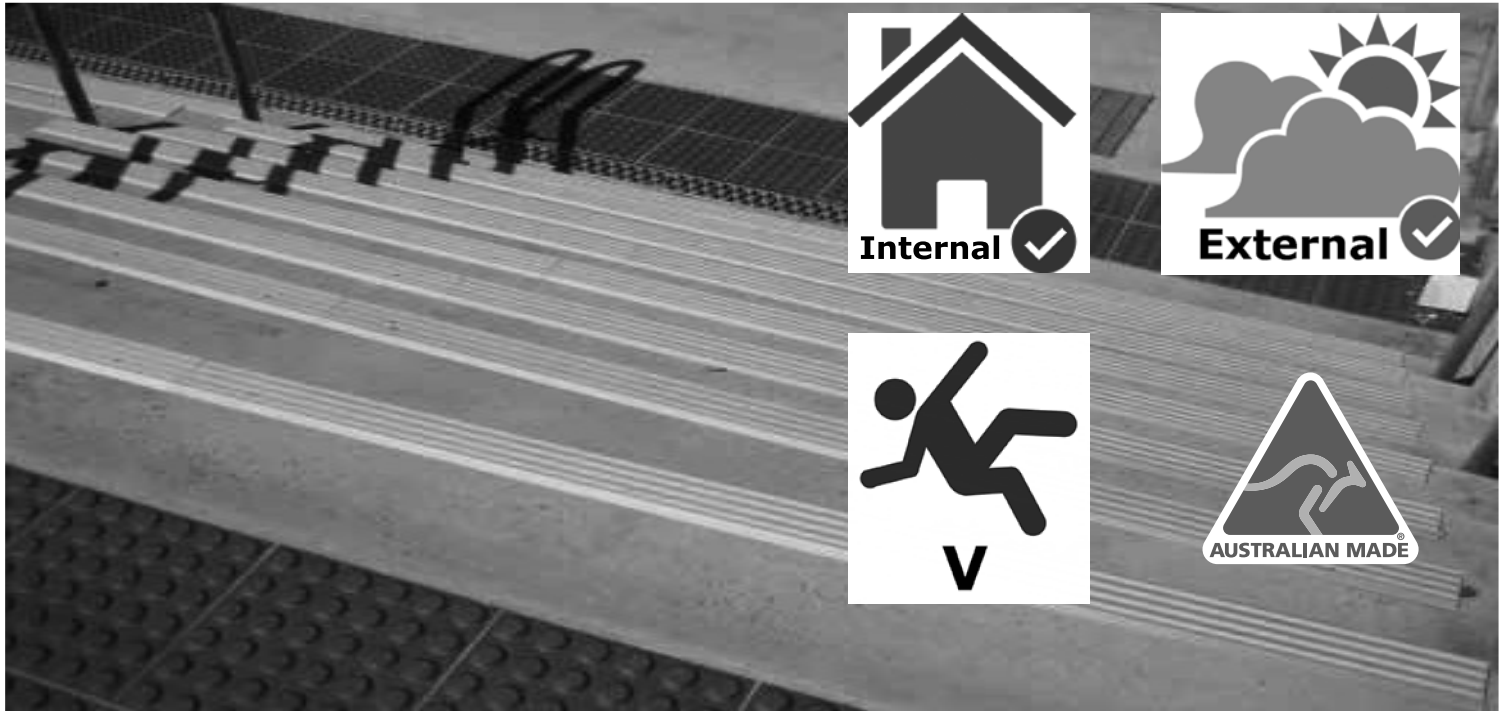


Crystalline™



Crystalline™

The benchmark in stair nosing design and performance - Crystalline™ offers the best possible performance to cost ratio out of any stair nosing. Once it is installed, it stays installed and performs year after year. The insert is made from a mixture of solvent-free epoxy resin and mineral corundum (aluminum oxide) and/or carborundum (silicon carbide). These minerals are next to diamond on the hardness scale and combined with the chemically resistant epoxy, form an extremely tough product. The insert does not lift, peel, delaminate and cannot be tampered with or vandalised. This insures a trouble-free product in even the harshest of external environments. Today, Crystalline™ can be found in locations such as; high-rise buildings, railway stations, health care facilities and educational institutions.

Advantages

- Time-proven architectural design featuring parallel coloured abrasive insert lines
- Profiles available to suite every possible installation method, complement every substrate and floor covering
- Non-slip by way of near diamond hard mineral inserts
- Very long service life in both indoor and outdoor situations - field tested
- Eight available insert colours allowing visual contrast to AS 1428.1:2009 over nearly every possible substrate
- Anodised aluminium as standard for improved appearance & corrosion resistance
- Extremely high chemical & wear resistance - UV stable
- Supplied pre-cut and drilled
- Suitable fasteners & adhesives available for substrates including concrete, ceramic & timber
- Manufactured in Australia

Crystalline™

Diminishing Type (retro-fit, surface mount) Profiles

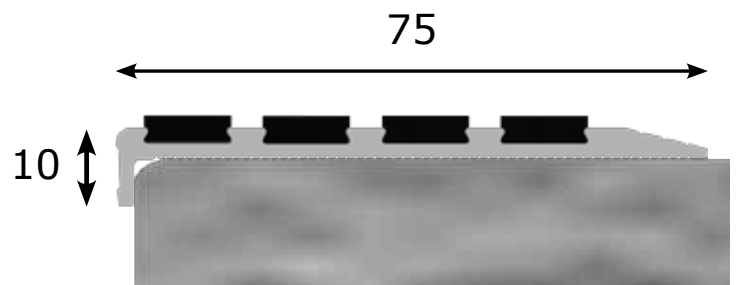
For installation over existing substrates including concrete, timber & tile.

Crystalline™ 4



Crystalline™ 4 , Square Nose, Diminishing Type
CLEAR anodised aluminium / BLACK insert
CL4-SN-DT(75x10)CA/BLACK
Standard insert colours: BLACK, CRETE WHITE,
MARBLE GREY, HI-VIS YELLOW, RED, GREEN, BLUE

AS AS 1428.1:2009
compliant dimensions

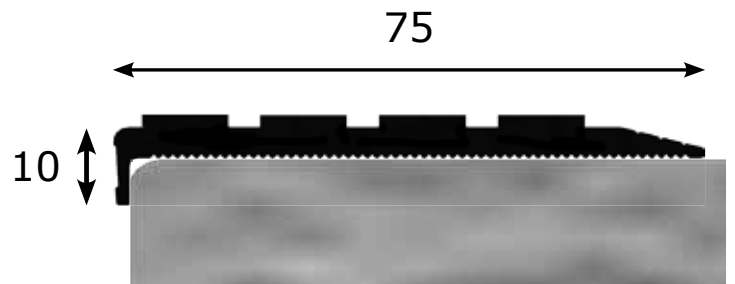


Crystalline™ 4

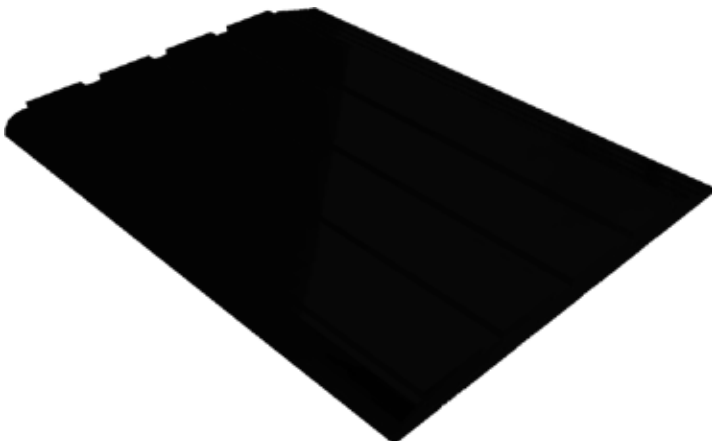


Crystalline™ 4 , Square Nose, Diminishing Type
BLACK anodised aluminium / BLACK insert
CL4-SN-DT(75x10)BA/BLACK
Standard insert colour: BLACK

AS AS 1428.1:2009
compliant dimensions

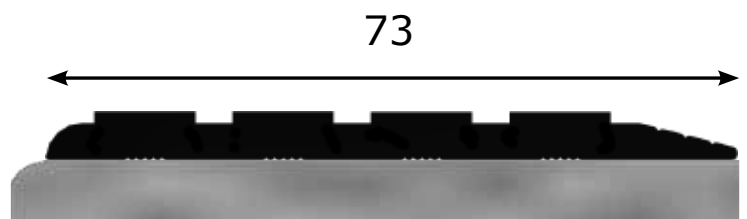


Crystalline™ 4



Crystalline™ 4 , Flush Nose, Diminishing Type
BLACK anodised aluminium / BLACK insert
CL4-FN-DT(73)BA/BLACK
Standard insert colour: BLACK

AS AS 1428.1:2009
compliant dimensions



Recess Type Profiles

For installation into a recess in substrates including concrete, timber & tile.

Crystalline™ 1

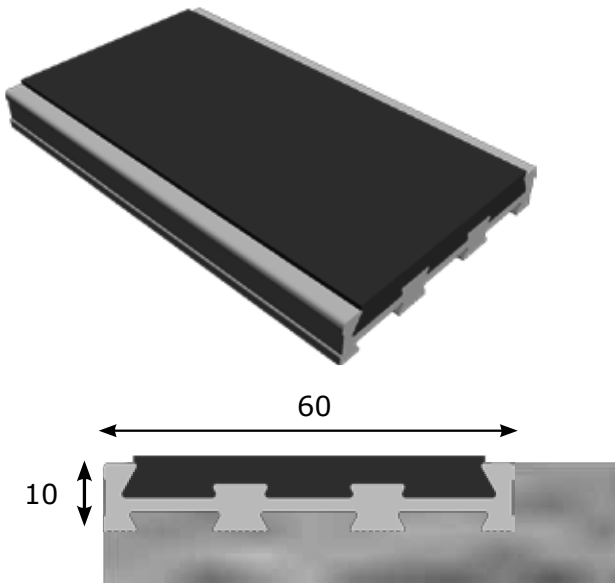
Crystalline™ 1, Square Nose, Recess Type

CLEAR anodised aluminium / BLUE insert

CL1-SN-RT(60x10)CA/BLUE

Standard insert colours: BLACK, CRETE WHITE, MARBLE GREY, HI-VIS YELLOW, RED, GREEN, BLUE

AS AS 1428.1:2009
compliant dimensions



Crystalline™ 3

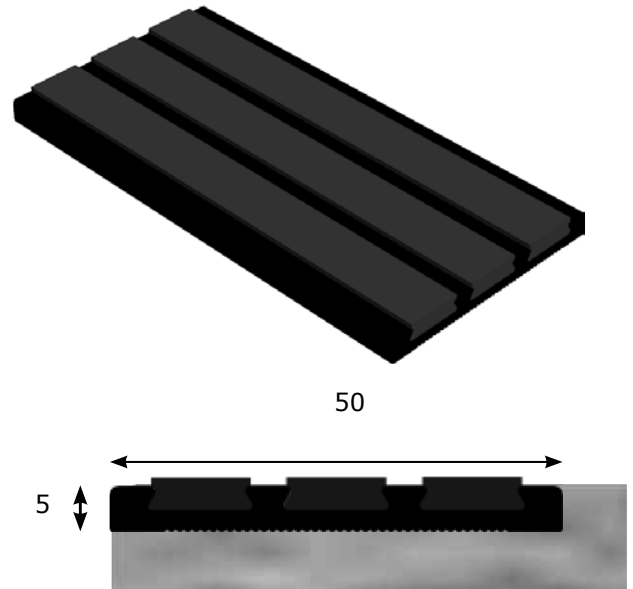
Crystalline™ 3, Square Nose, Recess Type

BLACK anodised aluminium / BLACK insert

CL4-SN-RT(50x5)BA/BLACK

Standard insert colour: BLACK

AS AS 1428.1:2009
compliant dimensions



Crystalline™ 4

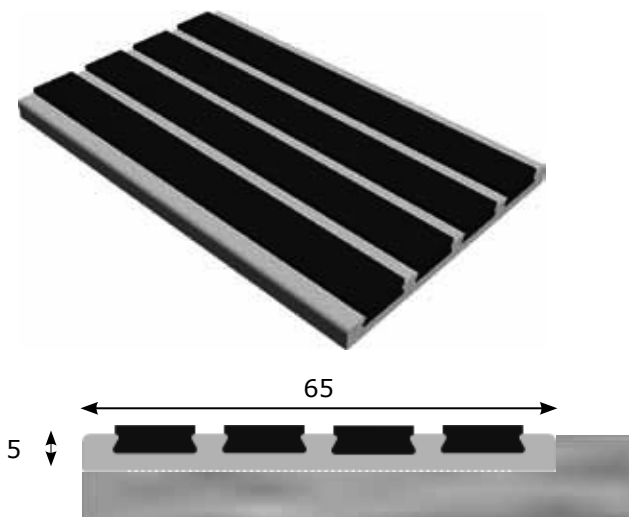
Crystalline™ 4, Square Nose, Recess Type

CLEAR anodised aluminium / BLACK insert

CL4-SN-RT(65x5)CA/BLACK

Standard insert colours: BLACK, CRETE WHITE, MARBLE GREY, HI-VIS YELLOW, RED, GREEN, BLUE

AS AS 1428.1:2009
compliant dimensions



Crystalline™ 4

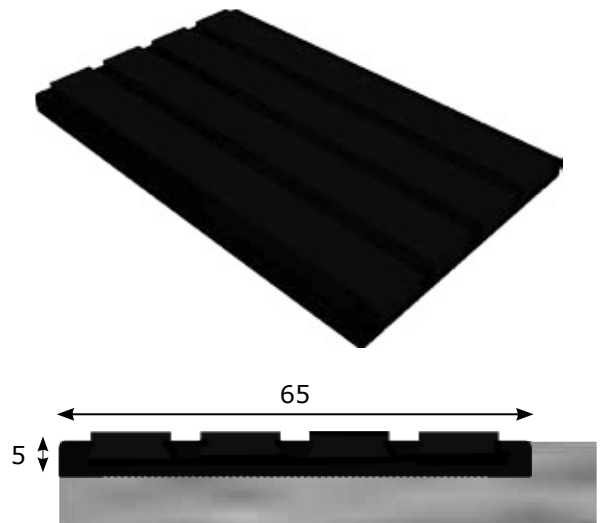
Crystalline™ 4, Square Nose, Recess Type

BLACK anodised aluminium / BLACK insert

CL4-SN-RT(65x5)BA/BLACK

Standard insert colour: BLACK

AS AS 1428.1:2009
compliant dimensions



Standard 60 with PVC Insert



Advantages

- Commercial grade stair nosing offering an excellent balance between functionality, aesthetics & price
- Suitable for dry, internal stairs in commercial environments
- Specialist profiles designed for use with concrete, carpet, timber, & tile substrates
- Black, light grey & reflex blue coloured inserts available as standard with project colours made to order
- Clear anodised aluminium as standard with black anodised available by special order

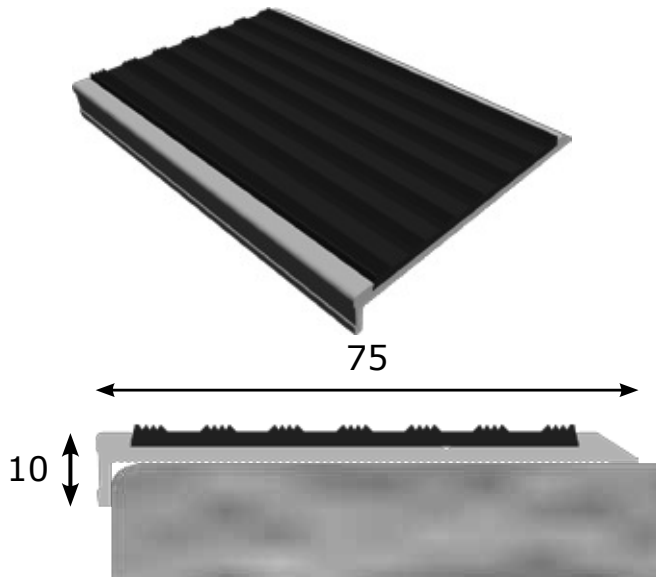
Standard 60, Square Nose, Diminishing Type

CLEAR anodised aluminium / BLACK PVC insert

S60-SN-DT(75x10)CA/PVC-BLACK

Standard insert colours: BLACK, LIGHT GREY & REFLEX BLUE

AS AS 1428.1:2009
compliant dimensions



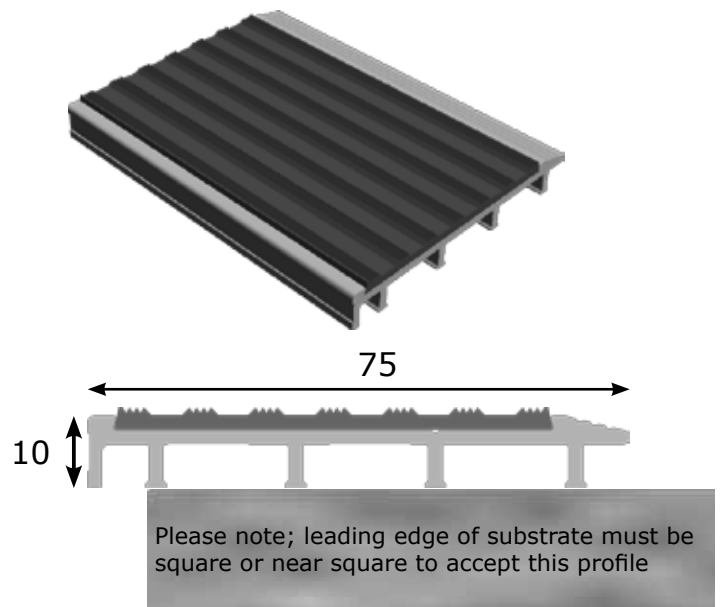
Standard 60, Square Nose, Carpet Type

CLEAR anodised aluminium / BLACK PVC insert

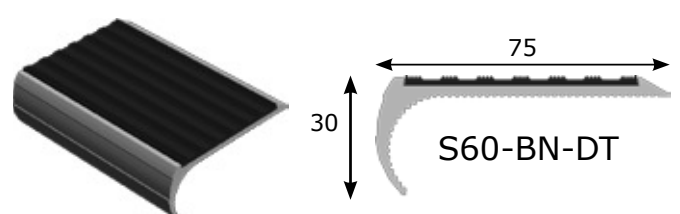
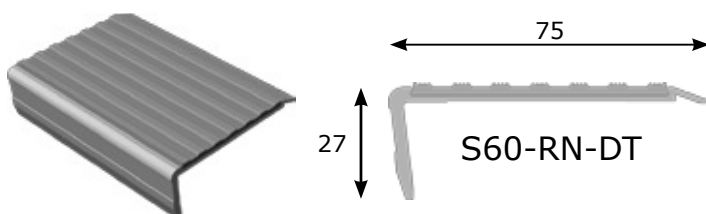
S60-SN-CT(75x10)CA/PVC-BLACK

Standard insert colours: BLACK, LIGHT GREY & REFLEX BLUE

AS AS 1428.1:2009
compliant dimensions



Legacy Profiles



Minimal with FlexiGrip Insert

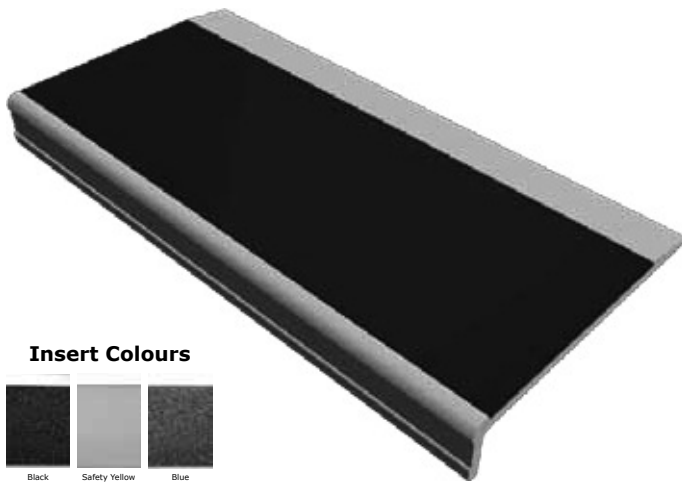


Advantages

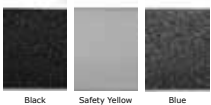
- Minimalist design
- Three AS1428.1:2009 compliant profiles
- Rated for internal & external environments - well suited to fire stairs
- FlexiGrip insert is highly non-slip, aluminium oxide coated, flexible & self-adhesive
- Concealed fixings
- Can be supplied pre-cut and drilled

Minimal 60, Square Nose, Diminishing Type
 CLEAR anodised aluminium / BLUE FlexiGrip insert
M60-SN-DT(75x10)CA/FG-BLUE
 Standard insert colours: BLACK, SAFETY YELLOW & REFLEX BLUE

AS ✓ AS 1428.1:2009 compliant dimensions



Insert Colours

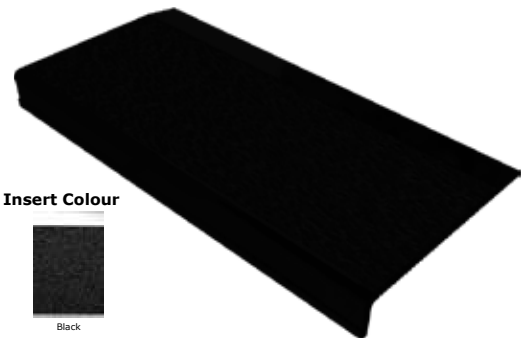


75

10

Minimal 37, Square Nose, Diminishing Type
 CLEAR anodised aluminium / BLUE FlexiGrip insert
M37-SN-DT(50x10)BA/FG-BLACK
 Standard insert colour: BLACK

AS ✓ AS 1428.1:2009 compliant dimensions



Insert Colour

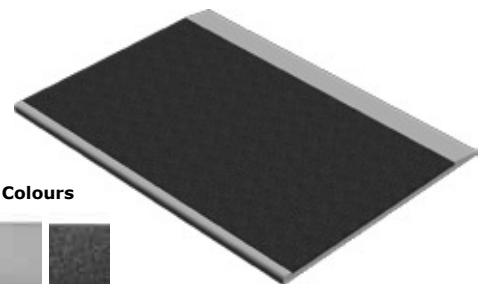


50

10

Minimal 60, Square Nose, Diminishing Type
 CLEAR anodised aluminium / BLUE FlexiGrip insert
M60-SN-DT(75x10)CA/FG-BLUE
 Standard insert colours: BLACK, SAFETY YELLOW & REFLEX BLUE

AS ✓ AS 1428.1:2009 compliant dimensions

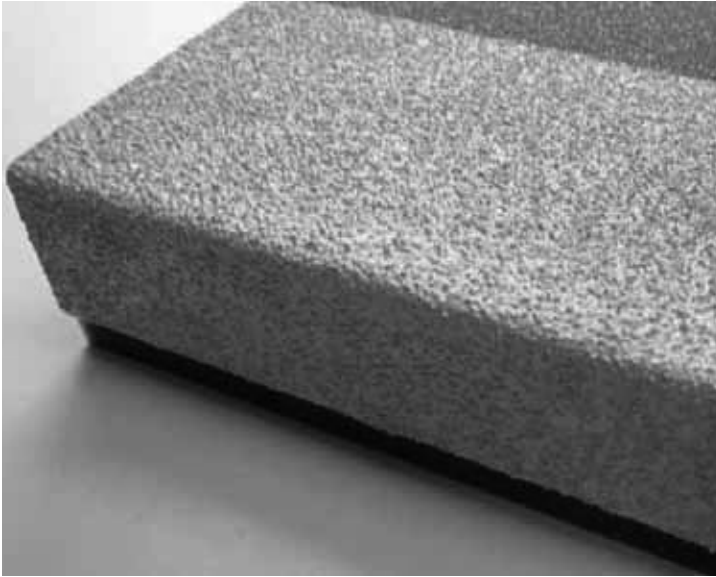


Insert Colours



73

Traka - Industrial Tread, Nosing & Plate

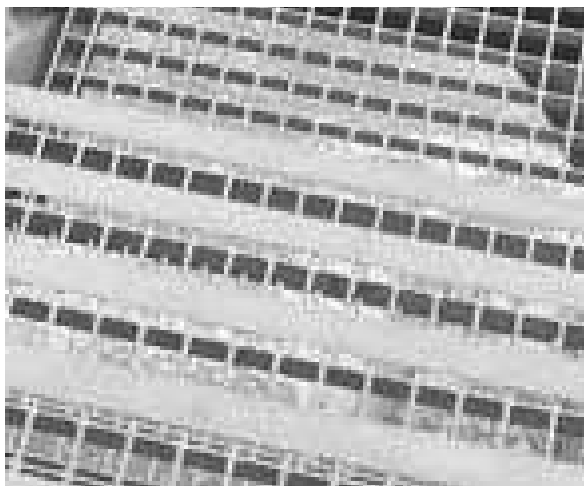


Designed to offer the maximum level of slip resistance and visual contrast in harsh industrial environments, Traka custom manufactured angles, plates and covers can be fabricated to a wide range of dimensions, grit sizes and colours to cover virtually any stable floor surface. TRAKA is available in virtually any angle or flat piece and can be used as industrial floor covering in a wide range of applications.

Advantages

- Traka is available with either a galvanised steel or aluminium backing and features a highly wear and chemical resistant grit surface. A special manufacturing process ensures the wear layer is resistant to delamination.
- Withstands a wide range of common industrial floor contaminants such as cleaning solvents, food production waste, engine oils and is completely UV stable.
- A special luminous (glow-in-the-dark) version is also available which has been engineered to resist direct sunlight in-off shore environments. It features an after-glow of more than 12 hours after recharging in natural or artificial light.

Please note; as there are numerous design considerations with Traka, please contact us for recommendations.



Backing Material	Aluminium	Galvanised Steel
Advantages	Light weight	High rigidity
Application	Use over aluminium, concrete, tile or timber substrates	Use over steel substrates & gratings
Sizes	50x10, 75x10 & any custom size	50x10, 75x10 & any custom size
Typical Colours	Safety yellow, black, luminous	Safety yellow, black, luminous